

E 100 Line

Types TED and THED

Replaces Types TEF and THEF

**600 Volts, A-c
250 Volts, D-c**

15-100 Amperes

Nov. 3, 1969

E 100 circuit breakers comply with Federal Government Specifications W-C-375a Amendment 3 dated Feb. 18, 1965, as follows:

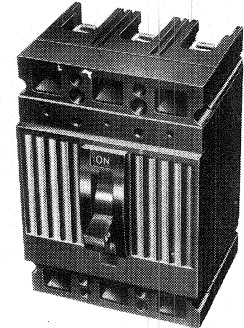
Type TED and THED, Class 2, U/L listed.

New TED design (TED and THED) replaces existing TEF (TEF and THEF) type breakers. As stocks of TEF type breakers are depleted, orders will be filled by automatically substituting the new design.

U/L LISTED INTERRUPTING RATINGS

(For IC Ratings Based on NEMA Test Procedures—see Page 1)

Breaker Type (2 and 3 pole)	240 Volt, A-c		480 Volt, A-c		600 Volt, A-c	
	Sym	Asym	Sym	Asym	Sym	Asym
TED						
480 V, 15-100 Amp	18,000	20,000	14,000	15,000		
600 V, 15-100 Amp	18,000	20,000	14,000	15,000	14,000	15,000
THED						
600 V, 15-100 Amp	65,000	75,000	22,000	25,000	18,000	20,000



(Photo 1209786)
TED 3-pole breaker

PRICES

TYPE TED 3-pole 480 and 600 Volts A-c (Includes load lugs only, add WL for line lugs)

CPD-P(175)

Amp Rating	TED 480 Volts A-c	List Price Each, GO-135	TED 600 Volts A-c	VU-BREAK* 600 Volts A-c	List Price Each, GO-135
15	TED 134 015	\$78.00	TED 136 015	TED 136V 015	\$91.00
20	TED 134 020		TED 136 020	TED 136V 020	
25	TED 134 025		TED 136 025	TED 136V 025	
30	TED 134 030		TED 136 030	TED 136V 030	
35	TED 134 035		TED 136 035	TED 136V 035	
40	TED 134 040		TED 136 040	TED 136V 040	
45	TED 134 045		TED 136 045	TED 135V 045	
50	TED 134 050		TED 136 050	TED 136V 050	
60	TED 134 060		TED 136 060	TED 136V 060	
70	TED 134 070		\$93.00	TED 136 070	
80	TED 134 080	TED 136 080		TED 136V 080	
90	TED 134 090	TED 136 090		TED 136V 090	
100	TED 134 100	TED 136 100		TED 136V 100	
100 ①	TED 134Y 100 ①	\$71.00	TED 136Y 100 ①	TED 136VY 100 ①	\$91.00
	Packaged 8 to Carton, Ship. Wt 22 Lb/Carton		Packaged 8 to Carton, Ship. Wt 22 Lb/Carton	Packaged 4 to Carton, Ship. Wt 11 Lb/Carton	

TYPE THED HI-BREAK 2- and 3-pole 600 Volts A-c (Includes load lugs only, add WL for line lugs)

Amp Rating	THED 2-pole	List Price Each, GO-135	THED 3-pole	List Price Each, GO-135
15	THED 126 015	\$117.00	THED 136 015	\$137.00
20	THED 126 020		THED 136 020	
25	THED 126 025		THED 136 025	
30	THED 126 030		THED 136 030	
35	THED 126 035		THED 136 035	
40	THED 126 040		THED 136 040	
45	THED 126 045		THED 136 045	
50	THED 126 050		THED 136 050	
60	THED 126 060		THED 136 060	
70	THED 126 070		\$135.00	
80	THED 126 080	THED 136 080		
90	THED 126 090	THED 136 090		
100	THED 126 100	THED 136 100		
100 ①	

Packaged 8 to Carton, Ship. Wt 22 Lb/Carton

① Nonautomatic circuit interrupter. Includes line and load lugs.
② U/L, NEMA Standards do not apply. Refer to Company for interrupting ratings.

* Trade-mark of General Electric Company.

New Information.

RS 700, 701, 702, 721-723
CW35, SW35, CW35GE, SW35GE, CW60, SW60 Tab 7C

LUG WIRE SIZES

Breaker Type	Amp Rating	Lug Wire Size
TED THED	15-100 Cu/Al	#14-2/0 Lug Cat. No. TCAL12

For additional lugs, see Section 7642:7.

ENCLOSURES ONLY (Includes Neutral)

CPD-P(175)

Description	Cat. No.	List Price, GO-134	Ship. Wt
NEMA 1, Handle-thru-Cover, Surface or Flush	TE100F or S	\$16.00	9 1/2 lb
NEMA 1, with KO's (D) NEMA 12, without KO's (J)	TE100D or J	28.00	9 lb
NEMA 3R, Raintight with Max. 2 1/2" Hubs, Add RH	TE100RH	45.00	10 lb
NEMA 4, 5—Water- and Dust-tight Cast Iron (C)	Available Only with Factory-installed Breaker		48 lb
NEMA 4, 5—Water- and Dust-tight Stainless Steel (CS)	TE100CS	267.00	48 lb

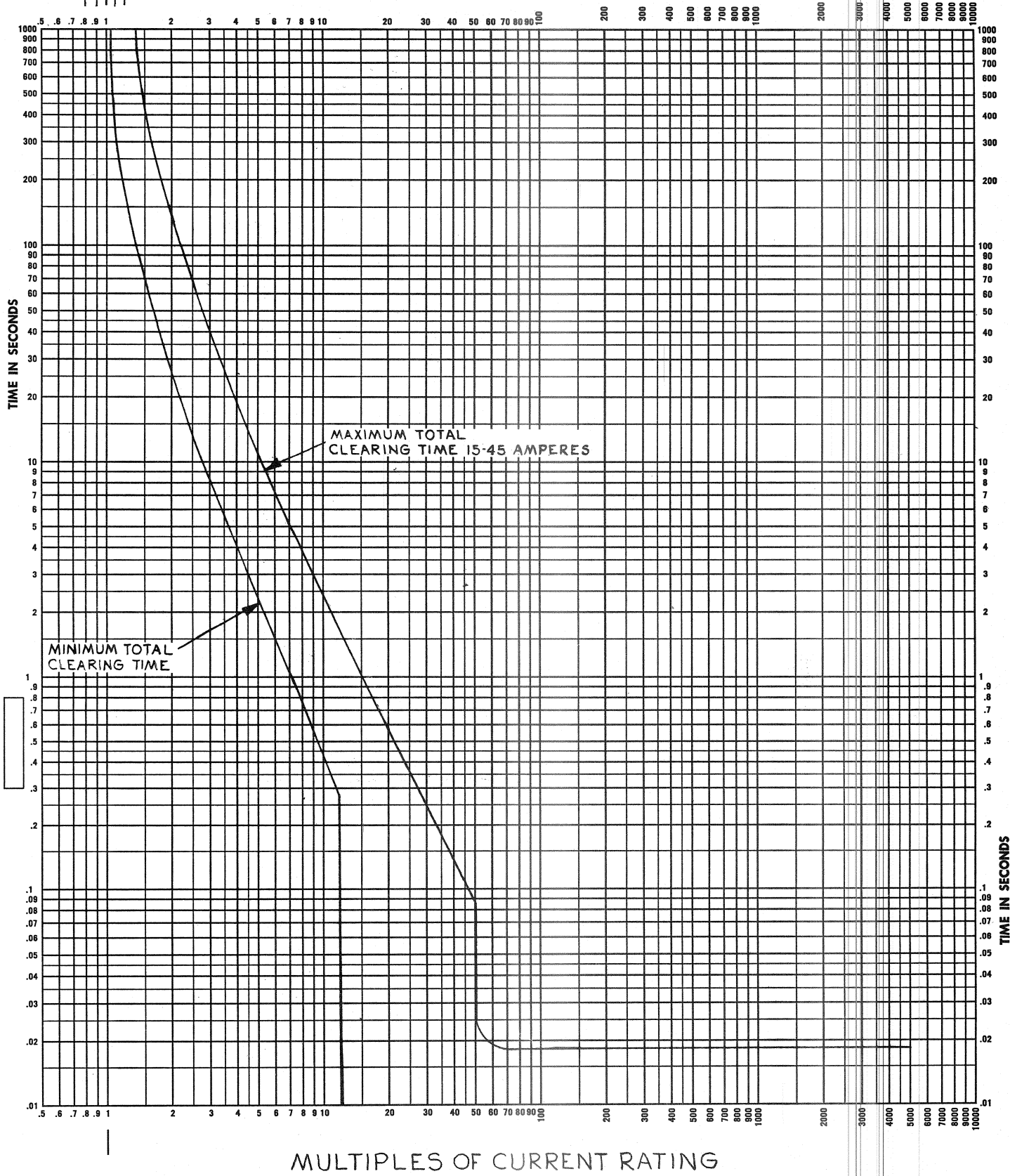
ACCESSORIES AND MODIFICATIONS

See Section 7642, pages 1-10.

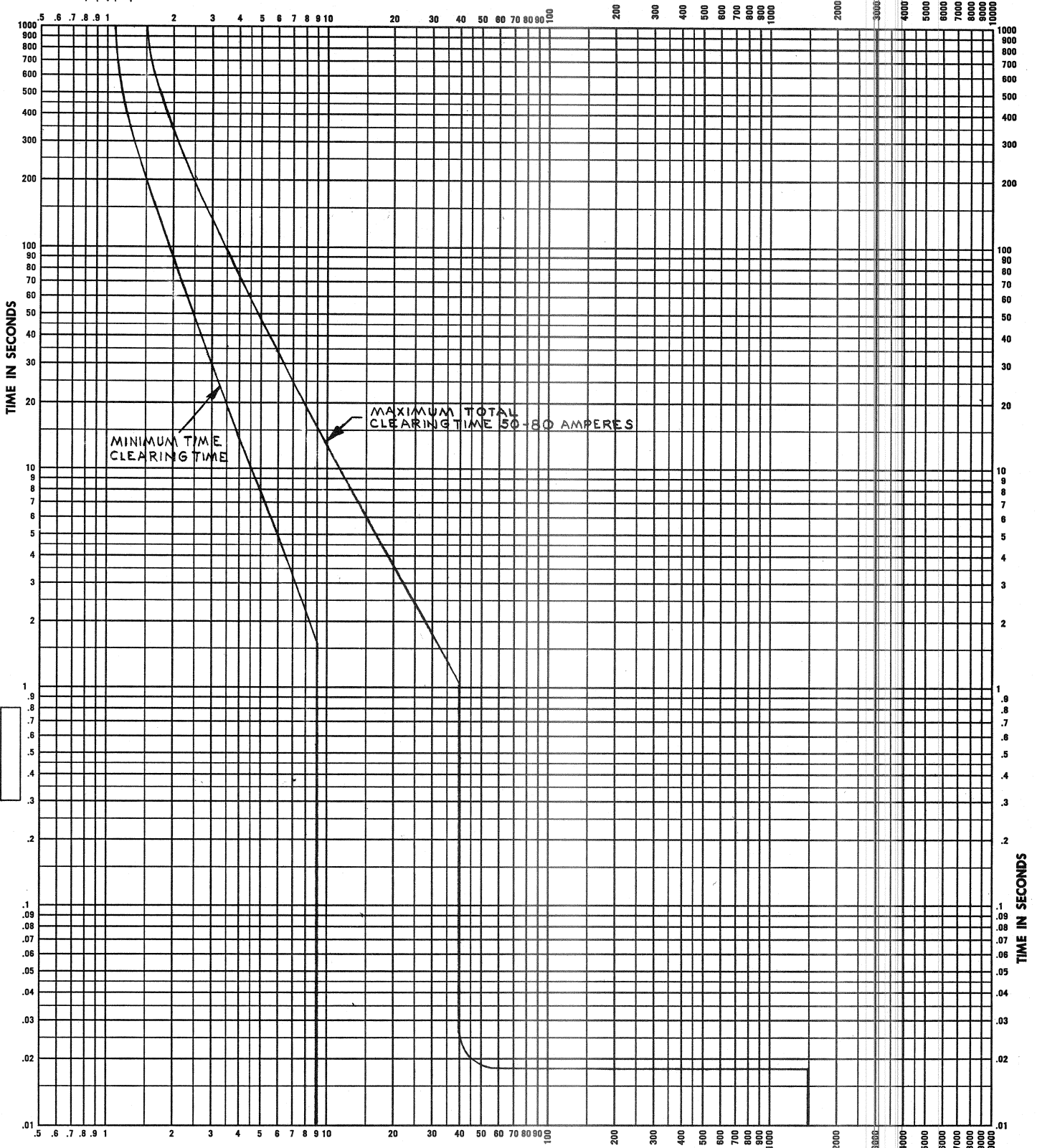
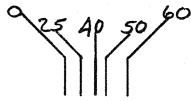
REFERENCE—E 100:
Publications and DimensionsPage 2

Prices and data subject to change without notice

0.25 40 50 60



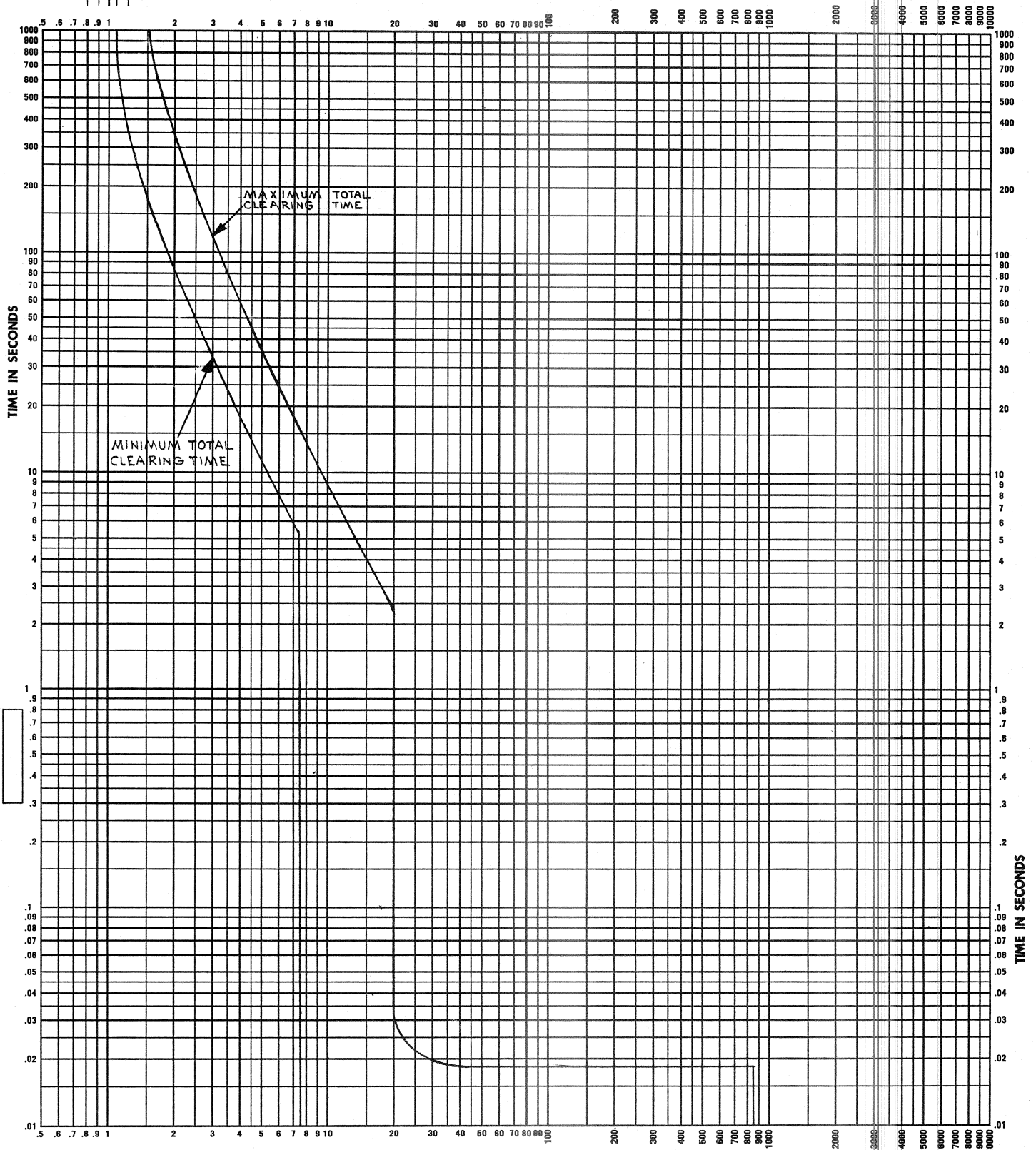
<p>GENERAL ELECTRIC</p> <p>CURRENT RATINGS 15, 20, 25, 30, 35, 40 AND 45 AMPS</p> <p>VOLTAGE RATINGS 480 VOLTS AC 600 VOLTS AC</p> <p>FREQUENCY RATING 60 HZ</p>	<p>MOLDED-CASE CIRCUIT BREAKERS E-100 LINE</p> <p>ENCLOSURE COMPENSATED TYPES TED-THED</p> <p>LONG TIME DELAY AND INSTANTANEOUS TIME CURRENT CURVES (CURVES SHOW BREAKER IN OPEN AIR 40°C AMBIENT WIRED WITH CONDUCTORS OF CORRESPONDING RATING NO PRIOR LOAD, FOR ALL OTHER AMBIENTS USE RATING SHIFT INDEX AT TOP OF SHEET)</p>	<p>GES 6113</p> <p>ADJUSTMENTS LONG TIME DELAY THERMAL TRIP: NOT ADJUSTABLE</p> <p>INSTANTANEOUS MAGNETIC TRIP: NOT ADJUSTABLE</p>
---	---	---



MULTIPLES OF CURRENT RATING

<p>GENERAL ELECTRIC</p> <p>CURRENT RATINGS 50, 60, 70, AND 80 AMPERES</p> <p>VOLTAGE RATINGS 480 VOLTS AC 600 VOLTS AC</p> <p>FREQUENCY RATING 60 HZ</p>	<p>MOLDED-CASE CIRCUIT BREAKERS E-100 LINE</p> <p>ENCLOSURE COMPENSATED TYPES TED-THED</p> <p>LONGTIME DELAY AND INSTANTANEOUS TRIP TIME CURRENT CURVES (CURVES SHOW CIRCUIT BREAKER IN OPEN AIR 40°C AMBIENT WIRED WITH CONDUCTORS OF CORRESPONDING RATING NO PRIOR LOAD FOR ALL OTHER AMBIENTS USE RATING SHIFT INDEX AT TOP OF SHEET)</p>	<p>GES-6114</p> <p>ADJUSTMENTS LONGTIME DELAY THERMAL TRIP: NOT ADJUSTABLE INSTANTANEOUS MAGNETIC TRIP: NOT ADJUSTABLE</p>
---	--	---

0 25 40 50 60



MULTIPLES OF CURRENT RATING

<p>GENERAL ELECTRIC</p> <p>CURRENT RATINGS 90 AND 100 AMPERES</p> <p>VOLTAGE RATINGS 480 VOLTS AC 600 VOLTS AC</p> <p>FREQUENCY RATING 60 HZ</p>	<p>MOLDED-CASE CIRCUIT BREAKERS E-100 LINE</p> <p>ENCLOSURE COMPENSATED TYPES TED-THED</p> <p>LONGTIME DELAY AND INSTANTANEOUS TIME CURRENT CURVES (CURVES SHOW CIRCUIT BREAKER IN OPEN AIR 40°C AMBIENT WIRE WITH CONDUCTORS OF CORRESPONDING RATING NO PRIOR LOAD. FOR ALL OTHER AMBIENTS USE RATING SHIFT INDEX AT TOP OF SHEET)</p>	<p>GES-6115</p> <p>ADJUSTMENTS LONGTIME DELAY THERMAL TRIP: NOT ADJUSTABLE</p> <p>INSTANTANEOUS MAGNETIC TRIP: NOT ADJUSTABLE</p>
---	---	--